



PORTMAN TOWERS  
MARYLEBONE, W1H  
Price On Application Leasehold

T. +44 (0) 20 7935 0011  
E. [enquire@napierwatt.co.uk](mailto:enquire@napierwatt.co.uk)  
[WWW.NAPIERWATT.CO.UK](http://WWW.NAPIERWATT.CO.UK)

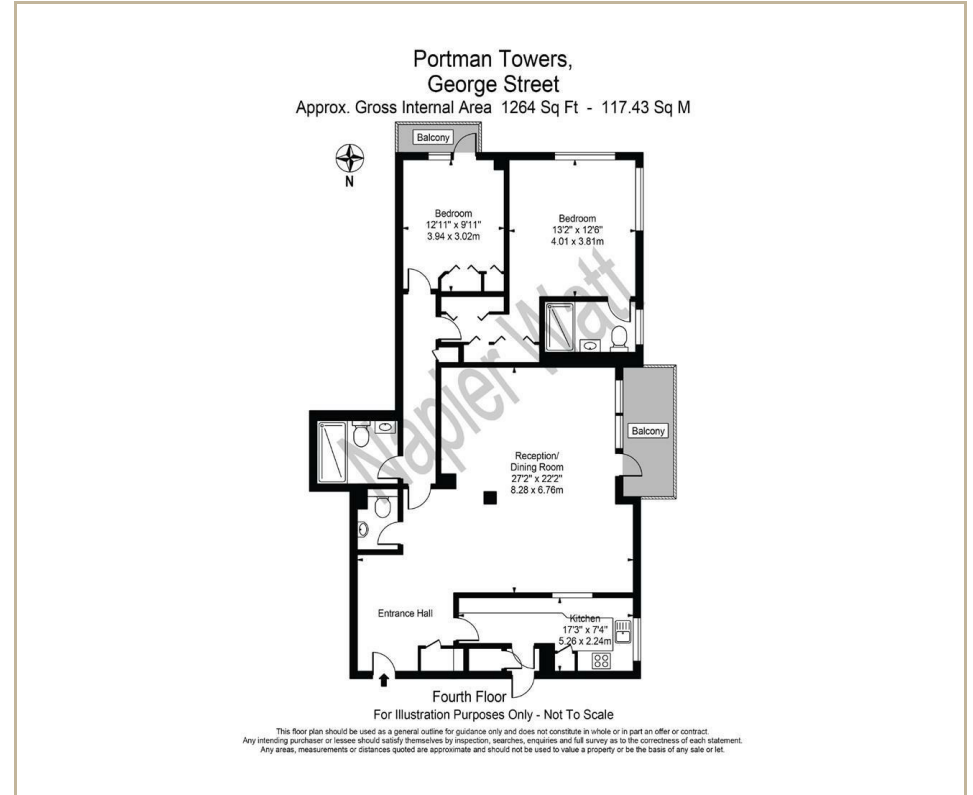
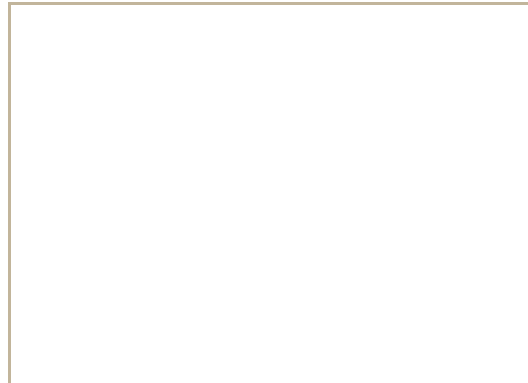
**NAPIER WATT**

PROPERTY CONSULTANTS

## Description

SOLD - OFF MARKET by Sole Agents Napier Watt are delighted to announce the sale of this 4th floor air conditioned, two bedroom, two bathroom apartment of approx 1270 sq ft (118 m sq) and includes a lift, a 24 Hour Porter as well as two balconies. The apartment's main reception/dining room provides plenty of flexible entertaining and relaxing space, with an additional guest WC.

More Properties Urgently Required



## TERMS

Leasehold 69 years

**For Clarification** we wish to inform prospective purchasers that we have prepared these sales particulars as a general guide. We have not carried out a survey, nor tested the services, appliances and specific fittings. Room sizes are approximate and rounded: they are taken between internal wall surfaces and therefore include cupboards/shelves, etc. Accordingly, they should not be relied upon for carpets and furnishings. Formal notice is given that all fixtures and fittings, carpeting, curtains/blinds and kitchen equipment, whether fitted or not, are deemed to be removable by the vendor unless specifically itemised within these sales particulars.

T. +44 (0) 20 7935 0011  
E. [enquire@napierwatt.co.uk](mailto:enquire@napierwatt.co.uk)  
[WWW.NAPIERWATT.CO.UK](http://WWW.NAPIERWATT.CO.UK)

**NAPIER WATT**  
PROPERTY CONSULTANTS